



# Community Forum

## **BOND PROGRAM UPDATE**

MONDAY, MARCH 4, 2024



# SECURITY UPDATES

# COMPLETED

*projects*



- ✓ Upgrades access control
- ✓ Staff IDs
- ✓ Door prop alert systems
- ✓ Increased lockdown button access
- ✓ New exterior door locks
- ✓ Risk & vulnerability assessment
- ✓ Dedicated safety team
- ✓ Partnership with local law enforcement

# IN PROGRESS & FUTURE

projects



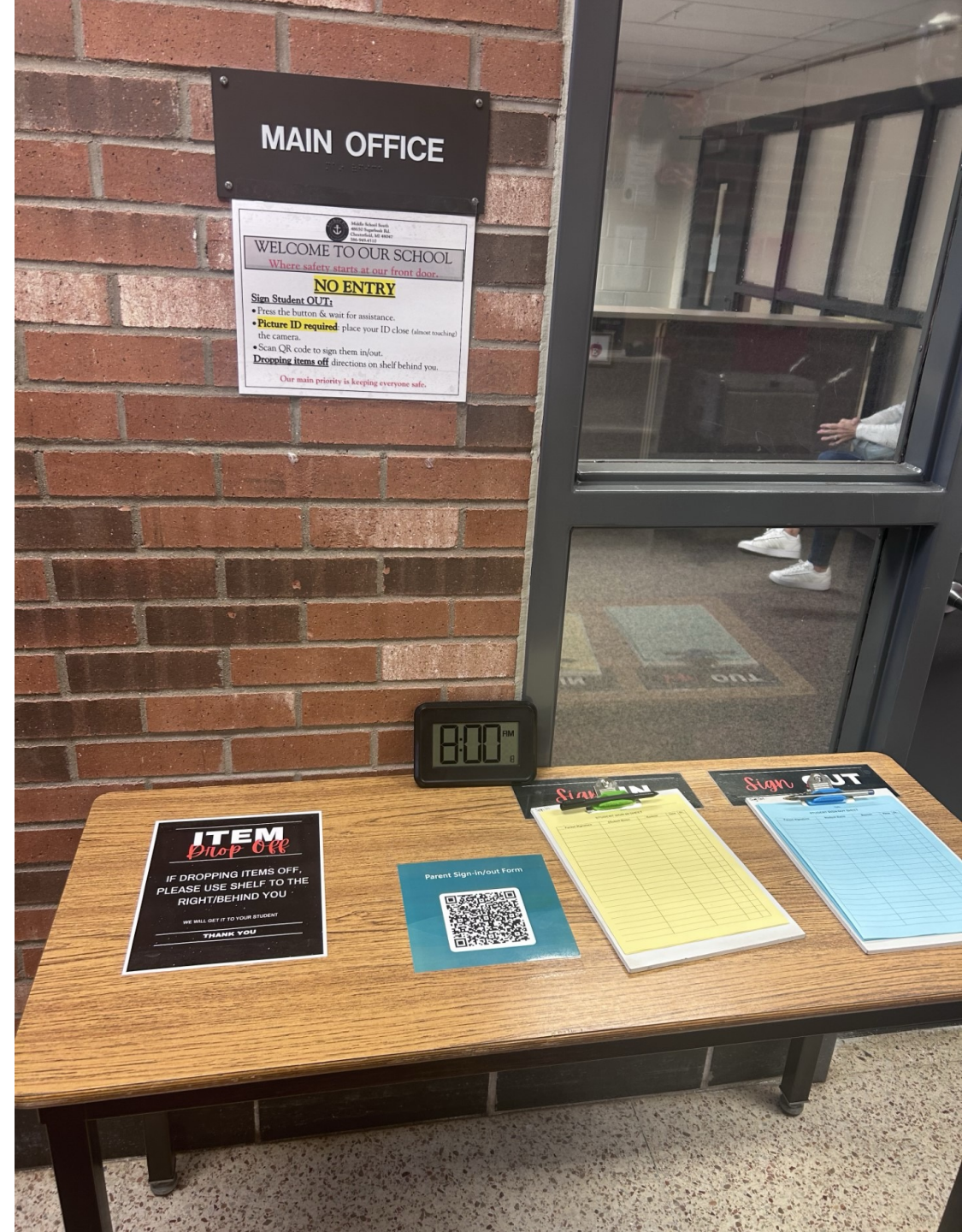
- ✓ **Radios** - *in progress*
- ✓ **Cameras** - *in progress*
- ✓ **Threat assessment procedures** - *in progress*
- ✓ **Active intruder response training** - *in progress*
- ✓ **Emergency reunification procedures**
- ✓ **School emergency / crisis team**
- ✓ **Weapon detection technology**
- ✓ **Bullet resistant window film**

# Safety

## STARTS AT THE FRONT DOOR

### UPGRADES & SECURITY ENHANCEMENTS

- Secure vestibule
- Visitor management



# Safety & SECURITY

PERFORMANCE YOU CAN COUNT ON

<b>5K+</b> U.S. Districts	<b>37K+</b> K-12 Schools	
<b>50%+</b> of the Top 100 Largest Districts	<b>98%+</b> Client Retention	

*"Raptor gives us the peace of mind that we're in a safe environment."  
Assistant Superintendent (NJ)*

## Raptor Technologies & Anchor Bay School District

Every Child, Every School, Every Day

## Solutions to Manage Your Entire School Safety Lifecycle

PREVENT		PREPARE	RESPOND	RECOVER		
 <b>VISITOR</b> KNOW WHO IS ON CAMPUS	 <b>VOLUNTEER</b> SCREEN VOLUNTEERS	 <b>STUDENTS SAFE</b> INTERVENE EARLY	 <b>DRILL MANAGER</b> PRACTICE & IMPROVE	 <b>RAPTOR ALERT</b> INITIATE A RESPONSE	 <b>ACCOUNTABILITY</b> ACCOUNT FOR EVERYONE	 <b>REUNIFICATION</b> REUNIFY FAMILIES

*"Raptor really is priceless. It has given us freedom, peace of mind and the ability to communicate more accurately with one another. Raptor is part of our everyday operations."  
Director of Student Services (IL)*

# Solutions to Manage Your Entire School Safety Lifecycle



"Raptor really is priceless. It has given us freedom, peace of mind and the ability to communicate more accurately with one another. Raptor is part of our everyday operations."

*Director of Student Services (IL)*

# DAILY & EMERGENCY OPERATIONS SOLUTION



## DISMISSAL MANAGEMENT

- Reduce time spent on dismissal
- Eliminate front office calls
- Make instant dismissal changes
- Ensure student safety every day
- Communicate in real time
- Increase instructional time



## EMERGENCY ALERT SYSTEM

- Equip staff with a silent panic button
- Account for every student's safety
- Send staff customized protocols
- Signal emergency responders quickly
- Utilize a system everyone uses daily
- Communicate in real time with staff & parents



## EMERGENCY REUNIFICATION TOOL

- Initiate reunification on any device
- Easily communicate with staff & parents
- Check in guardians securely
- Mark students dismissed when reunited
- Use a process familiar with everyone
- Eliminate inefficient paper reunification



## DIGITAL HALL PASSES

- Create timestamped digital hall passes
- Give hall monitors a real-time view
- Account for students during emergencies
- Limit passes to mitigate student behavior
- Access reports to make informed decisions
- Gain insights to serve students better





# PROGRAMMING UPDATES

# NEW CAREER PATHWAY TRACKS

*A new day in the Bay!*



**ENGINEERING,  
MANUFACTURING,  
NATURAL SCIENCE  
& AGRICULTURE**



**HEALTH & HUMAN  
SERVICES**



**ARTS &  
COMMUNICATION**



**BUSINESS &  
TECHNOLOGY**



# CONSTRUCTION UPDATES

# COMPLETED PROJECTS • DISTRICT WIDE ACCESS CONTROLS



**More than 75 card readers installed**



**More than 300 Door Contacts Installed**

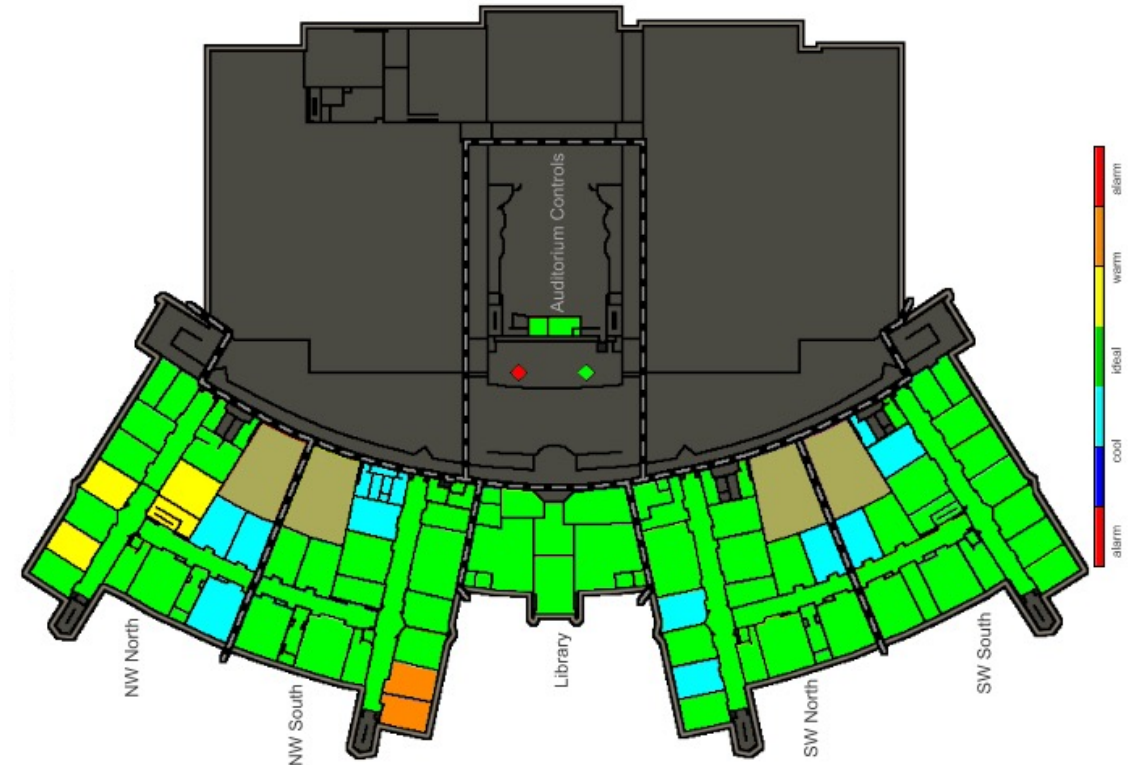
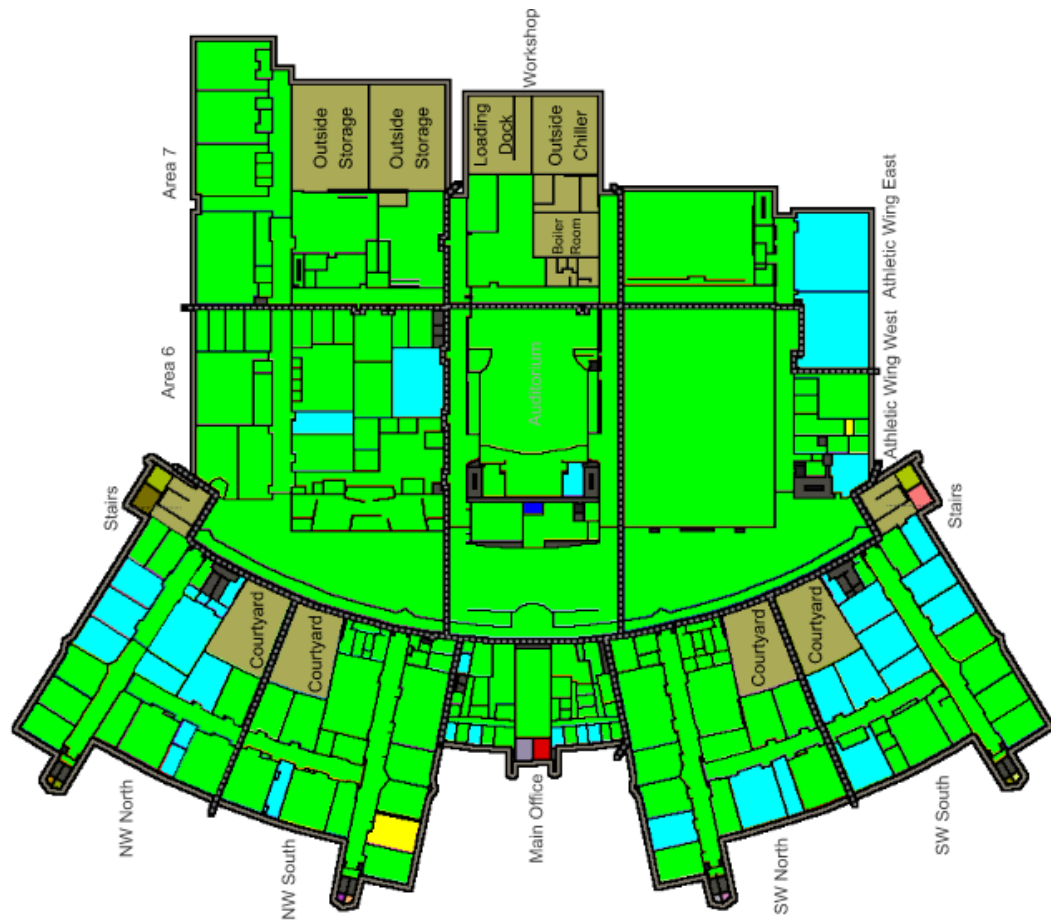


**Exterior Door Key Replacement**



**All 14 Buildings in District**

# COMPLETED PROJECTS • HS TEMPERATURE CONTROLS



**MORE THAN 250 PIECES OF EQUIPMENT HAVE BEEN ADDED TO BMS SYSTEM**

# COMPLETED PROJECTS • HS GYM FLOOR & SCORE BOARDS



# COMPLETED PROJECTS • STORAGE FACILITY



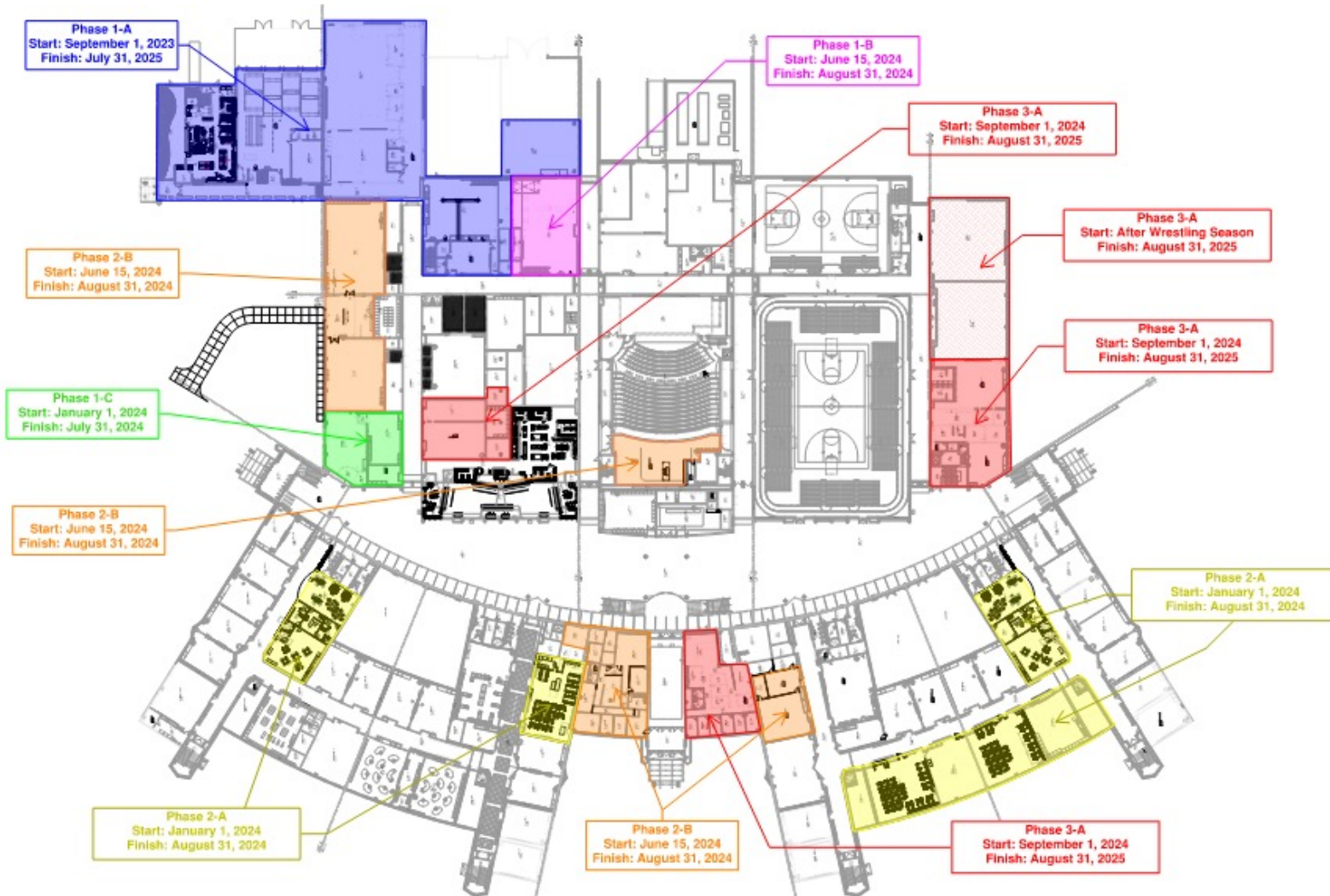
# COMPLETED PROJECTS • TRANSPORTATION FENCING





# CURRENT PROJECTS • HS ADDITIONS & RENOVATIONS

PHASE  
1



**12,000 SF ADDITION**  
Kitchen/Restaurant  
Auto Shop  
Covered Yard

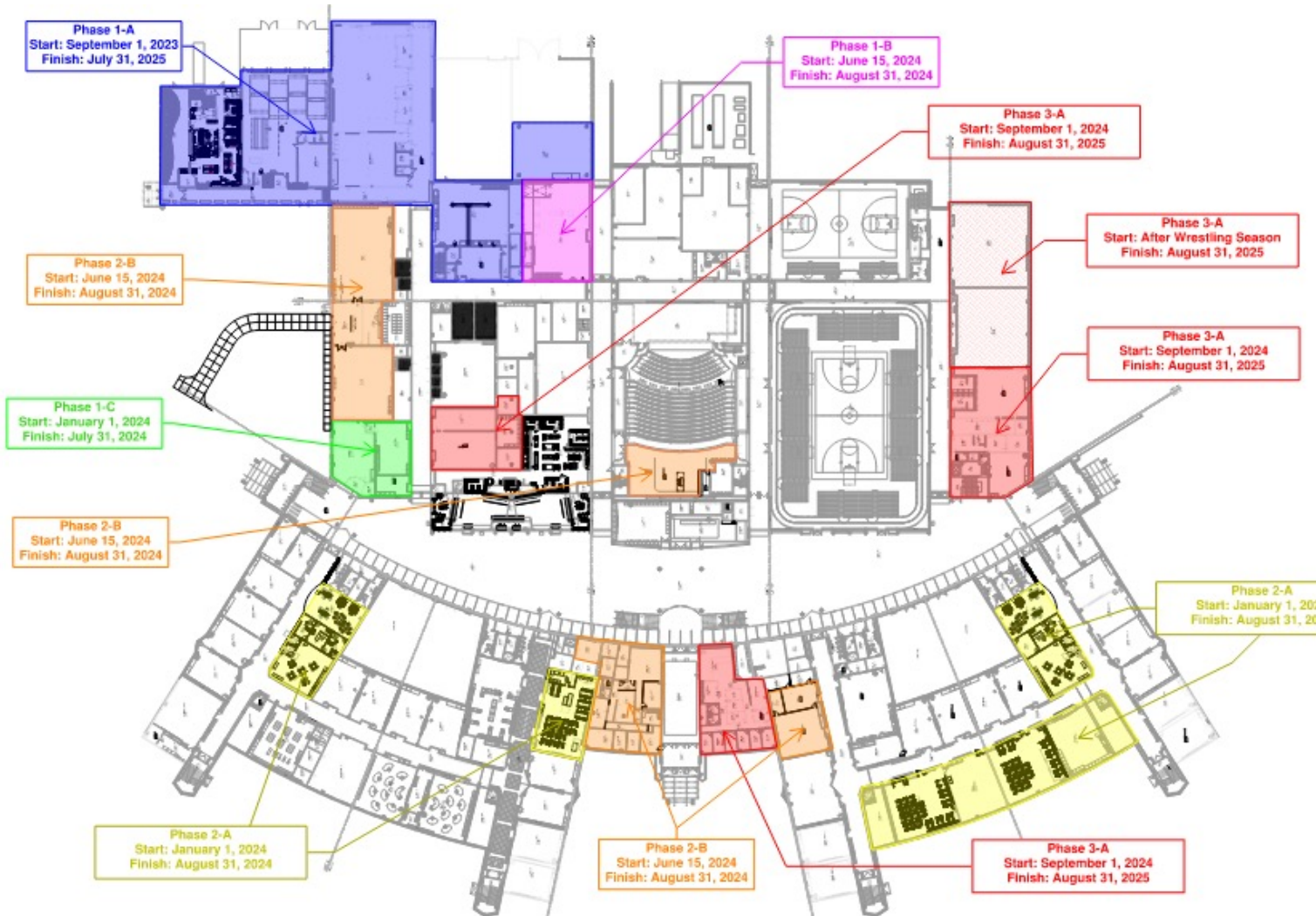


## INTERIOR RENOVATIONS

Robotics  
Welding  
Engineering  
Chiller Replacement  
Fire Alarm Upgrades

# CURRENT PROJECTS • HS ADDITIONS & RENOVATIONS

PHASE  
2



**CTE PATHWAY OFFICES**



**HEALTH & HUMAN SERVICES**  
Medical Classrooms



**GRAPHIC ARTS**



**LAW / MOCK COURTROOM**



**BROADCASTING**

**Barton  
Malow**

# CURRENT PROJECTS • HS ADDITIONS & RENOVATIONS

PHASE  
1

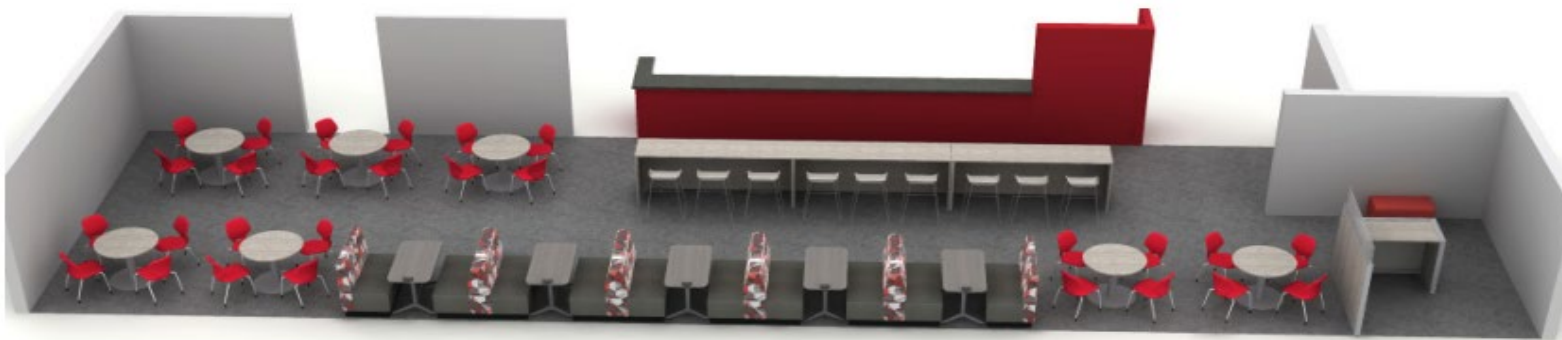


**12,000 SF ADDITION**  
Kitchen/Restaurant  
Auto Shop  
Covered Yard



## INTERIOR RENOVATIONS

Robotics  
Welding  
Engineering  
Chiller Replacement  
Fire Alarm Upgrades



# CURRENT PROJECTS • HS ADDITIONS & RENOVATIONS

PHASE  
2



COURTROOM - MODE A



COURTROOM - MODE B



CTE PATHWAY OFFICES



HEALTH & HUMAN SERVICES  
Medical Classrooms



GRAPHIC ARTS



LAW / MOCK COURTROOM

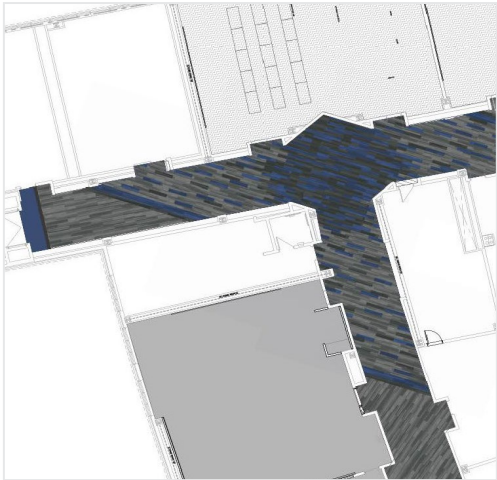


BROADCASTING

**Barton  
Malow**

# CURRENT PROJECTS • HS ADDITIONS & RENOVATIONS

PHASE  
2



**CTE PATHWAY OFFICES**



**HEALTH & HUMAN SERVICES**  
Medical Classrooms



**GRAPHIC ARTS**



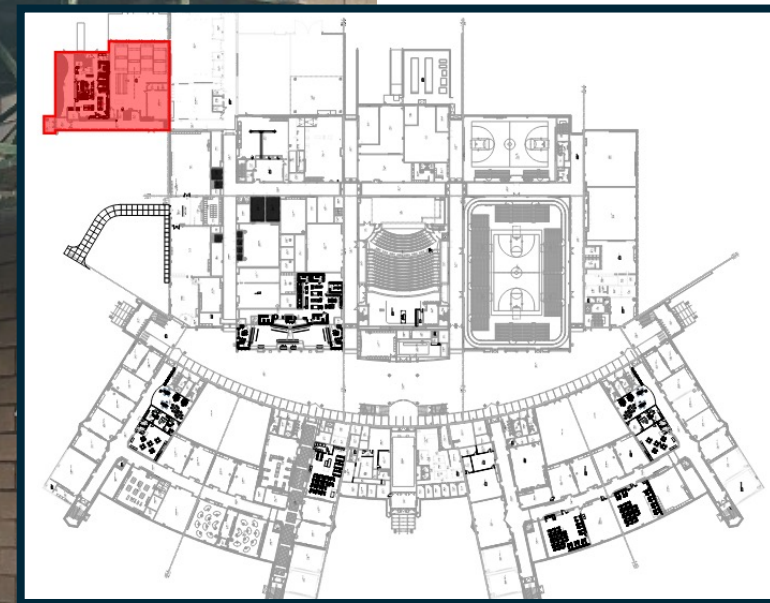
**LAW / MOCK COURTROOM**



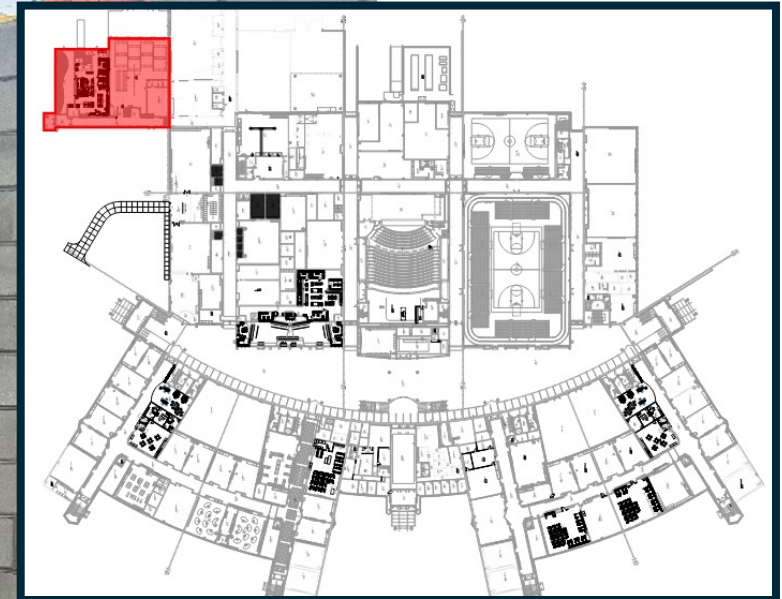
**BROADCASTING**

**Barton  
Malow**

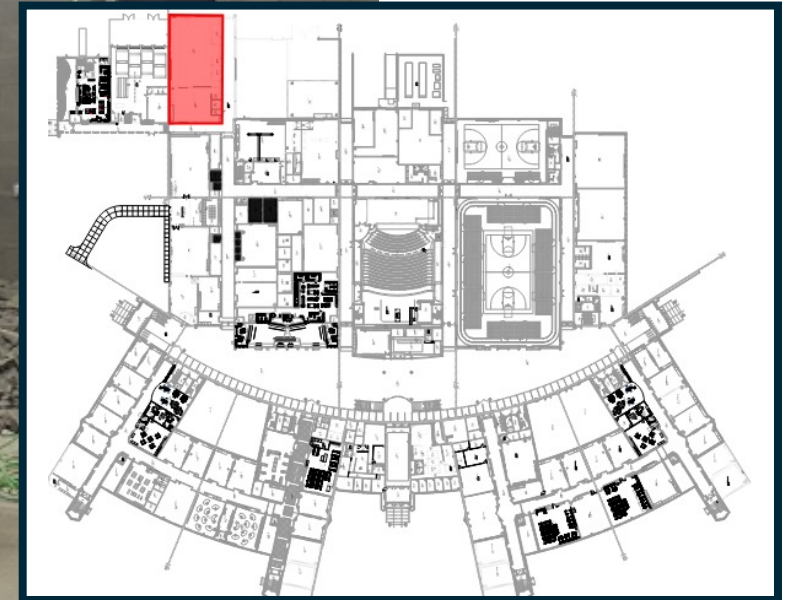
# CURRENT PROJECTS • HIGH SCHOOL ADDITION



# CURRENT PROJECTS • HIGH SCHOOL ADDITION

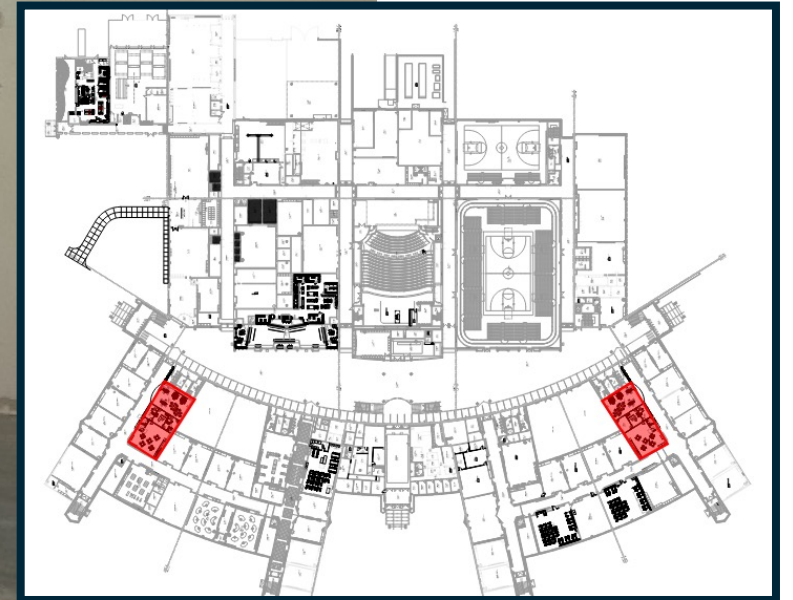


# CURRENT PROJECTS • ROBOTICS

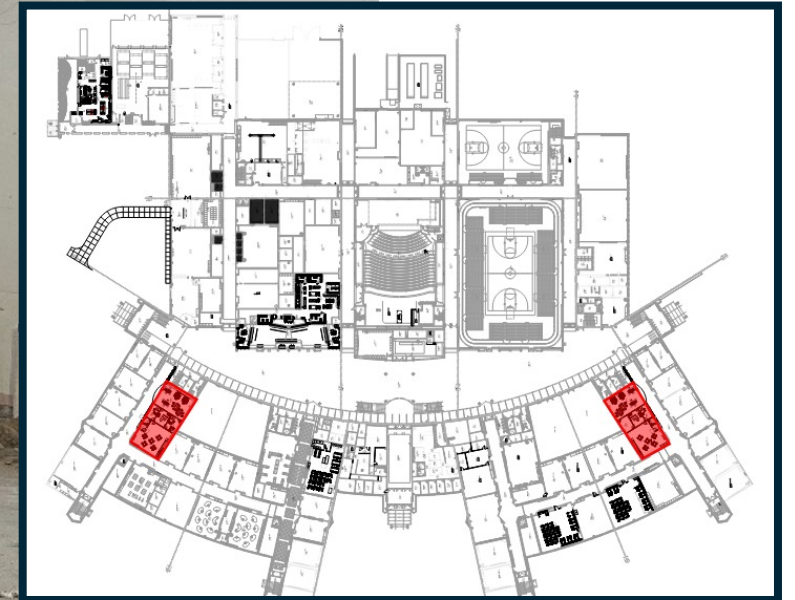




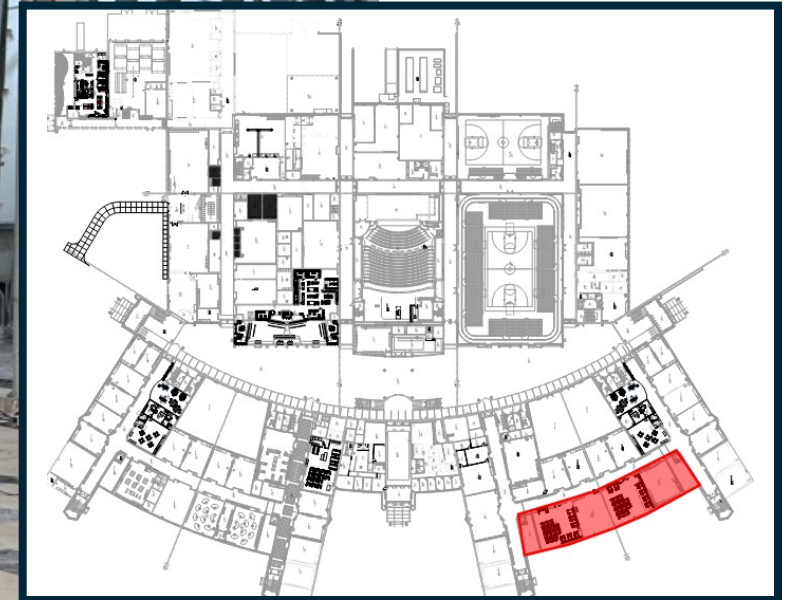
# CURRENT PROJECTS • CAREER PATHWAY OFFICE



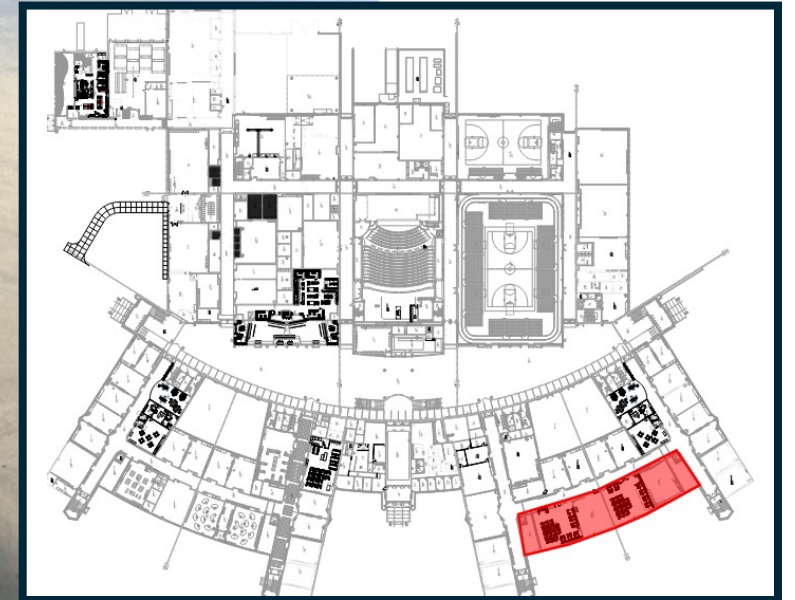
# CURRENT PROJECTS • CAREER PATHWAY OFFICE



# CURRENT PROJECTS • MEDICAL CLASSROOM RENOVATIONS



# CURRENT PROJECTS • MEDICAL CLASSROOM RENOVATIONS

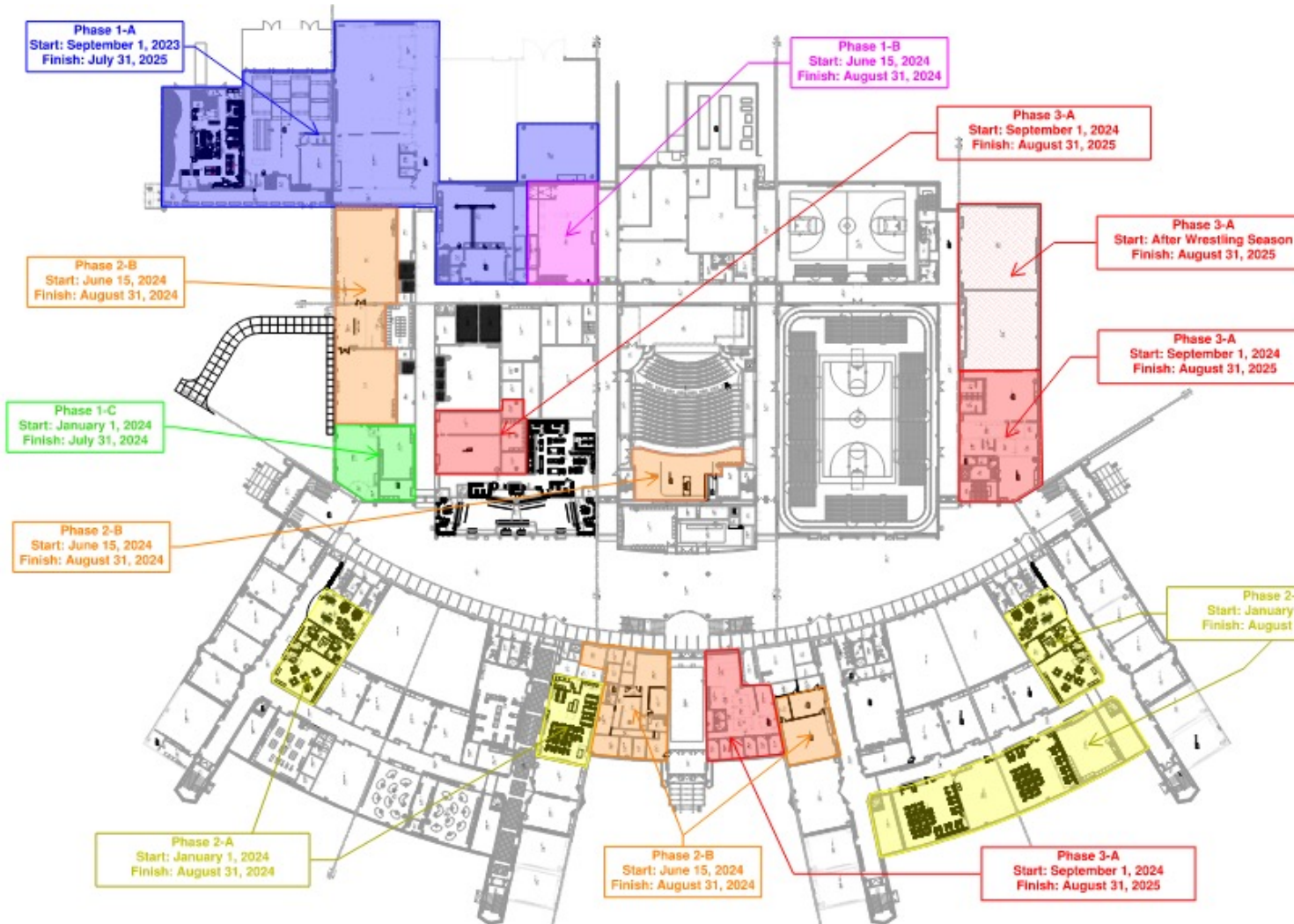


# CONSTRUCTION TRADES CLASS • HANDS ON EXPERIENCE



# THE NEXT PHASE • HS ADDITIONS & RENOVATIONS

PHASE  
3



**ATHLETIC WING RENOS**  
Wrestling Room, Weight Room & Fitness Studio



**MEDIA CENTER RENOS**



**STUDENT SUCCESS CENTER**



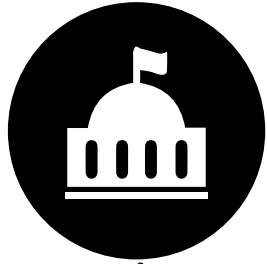
**AUX GYM FLOODING SOLUTIONS**

**Barton  
Malow**



# **BOND PROGRAM UPDATES**

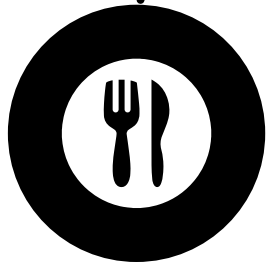
# WHAT'S CHANGED SINCE THE BOND PASSED?



**Early childhood legislation**



**Increased enrollment**



**Universal free & reduced lunch**

*forecasted*

## UTILIZATION

[ ENROLLMENT VS. CAPACITY ]

**PRE-K 203%**

**ELEMENTARY 98%**

**MIDDLE SCHOOL 58%**

**TOTAL 90%**



STILL ACHIEVING OUR

Goals

## EDUCATIONAL GOALS

- ✓ Facilitate *One Anchor Bay* culture
- ✓ Increase educational opportunities
- ✓ Maintain small school atmosphere
- ✓ Provide for project-based learning
- ✓ Create spaces for all learners
- ✓ Enhance design process curriculum
- ✓ Equitable classroom square footage
- ✓ Enhance student support resources

## OPERATIONAL GOALS

- ✓ Utilize key existing investments
- ✓ Correct geographical concerns
- ✓ Balance student population
- ✓ Lower operational costs
- ✓ Reduce average age of *K-12 facilities*
- ✓ Reduce *K-12 square footage*

*A new day in the Bay*

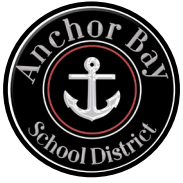
*we are  
listening*

**BASED ON  
COMMUNITY  
INPUT**

No "mega" elementary  
schools

Equitable educational  
programs for our  
middle schools

Reevaluating  
Lottie M. Schmidt



# HOW DO WE BEST UTILIZE OUR EXISTING SQUARE FOOTAGE TO ACHIEVE A ROBUST EARLY CHILDHOOD PROGRAM? .....

## 3 MAJOR QUESTIONS FOR DECISION MAKING

**1**

ADJUST GRADE LEVEL CONFIGURATION?

**2**

OPEN MACDONALD ELEMENTARY?

**3**

ASHLEY OR LIGHTHOUSE AS ELEMENTARY?

# CHANGE GRADE LEVEL CONFIGURATION

## why REASONS TO CONSIDER

---

Middle School North & South underutilized

Better utilize available capacity


### Middle schools **58% utilized (enrollment vs. capacity)**

Elementary schools are near capacity

Leverage bond dollars for universal pre-k space

Balance utilization across elementary & middle schools

- 
- ✓ Facilitate One Anchor Bay culture sooner
  - ✓ Consistent & enhanced programming
  - ✓ Closes 5/6 student achievement gap
  - ✓ Additional athletic / extra curricular opportunities
  - ✓ Equalizes MS experiences & opportunities for students
  - ✓ Improves transportation & eliminates shuttling
  - ✓ Balances space utilization
  - ✓ Eliminates need for "mega" elementary school

- 
- ✗ Additional transition
  - ✗ Length of travel for some
  - ✗ Impact on siblings

LET'S BREAK FOR A 10-MINUTE

*brainstorm*

ADJUST GRADE LEVEL CONFIGURATION?



# OPEN MACDONALD ELEMENTARY SCHOOL

## *why* REASONS TO CONSIDER

---

Unused square footage

Better utilize available classroom space

Current elementary schools are near capacity

Maintain smaller class sizes

### ***Future enrollment projections***

Regional development & expansion (26 Mile)



- ✓ Balances space utilization
- ✓ Eliminates need for "mega" elementary school
- ✓ Anticipated area of growth
- ✓ MacDonald is one of the newer district facilities



- ✗ Location to current student population
- ✗ Administration relocation

LET'S BREAK FOR A 10-MINUTE

*brainstorm*

OPEN MACDONALD ELEMENTARY SCHOOL?



vs.



# ASHLEY OR LIGHTHOUSE AS ELEMENTARY

## why REASONS TO CONSIDER

---

Centrally located facilities

Two elementary schools on one campus

***Lighthouse is the district's largest elementary school***

Lighthouse is the district's oldest elementary school

### ASHLEY AS ELEMENTARY

- ✓ 2017 bond improvements
- ✓ More flexible site (playgrounds, athletic fields)
- ✓ Better traffic flow & parking
- ✓ Lower renovation cost



### LIGHTHOUSE AS ELEMENTARY

- ✓ Utilize existing square footage
- ✓ Could be more cost effective (depending on solution)





LET'S BREAK FOR A 10-MINUTE

*brainstorm*

ASHLEY OR LIGHTHOUSE AS ELEMENTARY?

*pros* vs. *pros*



# HOW DO WE BEST UTILIZE OUR EXISTING SQUARE FOOTAGE TO ACHIEVE A ROBUST EARLY CHILDHOOD PROGRAM? .....

ADJUST GRADE LEVEL CONFIGURATION?

yes

no

OPEN MACDONALD ELEMENTARY?

OPEN MACDONALD ELEMENTARY?

yes

no

yes

no

ASHLEY OR LIGHTHOUSE?

ASHLEY OR LIGHTHOUSE?

ASHLEY OR LIGHTHOUSE?

ASHLEY OR LIGHTHOUSE?

PRE-K  
Lighthouse  
Lottie

PRE-K  
Ashley  
Lottie

PRE-K  
Lighthouse  
Lottie

PRE-K  
Ashley  
Lottie

PRE-K  
Lighthouse  
Lottie

PRE-K  
Ashley  
Lottie

PRE-K  
Lighthouse  
Lottie

PRE-K  
Ashley  
Lottie

K-4  
Ashley  
Great Oaks  
Maconce  
Naldrett  
MacDonald

K-4  
Lighthouse  
Great Oaks  
Maconce  
Naldrett  
MacDonald

K-4  
Ashley  
Great Oaks  
Maconce  
Naldrett

K-4  
Lighthouse  
Great Oaks  
Maconce  
Naldrett

K-5  
Ashley  
Great Oaks  
Maconce  
Naldrett  
MacDonald

K-5  
Lighthouse  
Great Oaks  
Maconce  
Naldrett  
MacDonald

K-5  
Ashley  
Great Oaks  
Maconce  
Naldrett

K-5  
Lighthouse  
Great Oaks  
Maconce  
Naldrett

5-6  
M.S. North

5-6  
M.S. North

5-6  
M.S. North

5-6  
M.S. North

6-8  
M.S. North  
M.S. South

6-8  
M.S. North  
M.S. South

6-8  
M.S. North  
M.S. South

6-8  
M.S. North  
M.S. South

7-8  
M.S. South

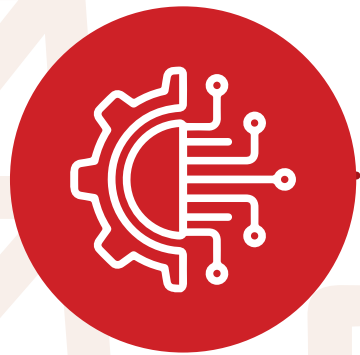
7-8  
M.S. South

7-8  
M.S. South

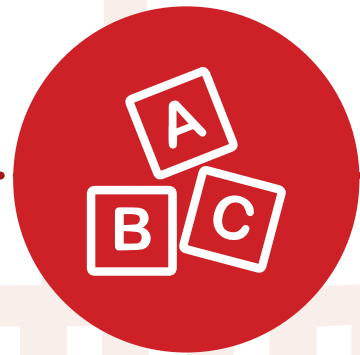
7-8  
M.S. South

WHAT COULD WE DO WITH  
**\$5-20M** IN ADDITIONAL FACILITY

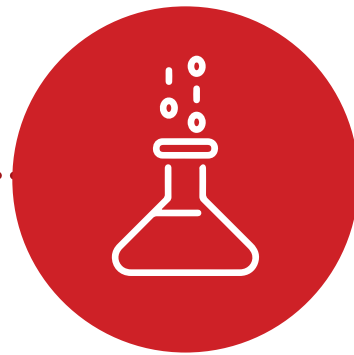
*enhancements*



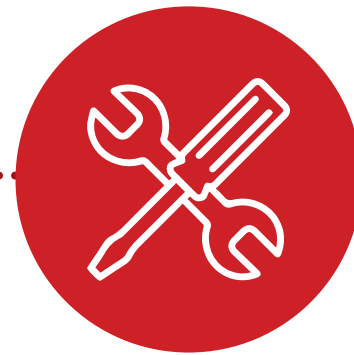
Additional  
M.S. CTE  
enhancements



Further  
elementary  
programming  
enhancements



Create  
new science  
labs



More  
infrastructure  
improvements



Additional  
programming  
improvements  
at Great Oaks  
& Maconce

STILL ACHIEVING OUR

Goals

## EDUCATIONAL GOALS

- ✓ Facilitate *One Anchor Bay* culture
- ✓ Increase educational opportunities
- ✓ Maintain small school atmosphere
- ✓ Provide for project-based learning
- ✓ Create spaces for all learners
- ✓ Enhance design process curriculum
- ✓ Equitable classroom square footage
- ✓ Enhance student support resources

## OPERATIONAL GOALS

- ✓ Utilize key existing investments
- ✓ Correct geographical concerns
- ✓ Balance student population
- ✓ Lower operational costs
- ✓ Reduce average age of *K-12 facilities*
- ✓ Reduce *K-12 square footage*

*A new day in the Bay*



# CHINALINK PROGRAM



# CHINALINK.....

*Program*

Considering allowing up to 35 students attend annually

- ✓ No district-provided housing, special programming, etc.
- ✓ District to sponsor visas & transportation to/from airport
- ✓ District currently accepts 22 exchange students
- ✓ Revenue to supplement summer, after-school programming & classroom supply accounts
- ✓ Offset short-term population dip at the high school
- ✓ Proposed agreement would be for 3 years

Thank you!



Q+A

*Questions after today's forum?*  
Contact us at **[bond@abs.misd.net](mailto:bond@abs.misd.net)**